



CONTRACTOR BIDDING FACTSHEET

Presidio Parkway, Doyle Drive Replacement Project – Phase II



PROJECT OWNER/SPONSOR: California Department of Transportation

TOTAL PROJECT VALUE: \$1.045 billion

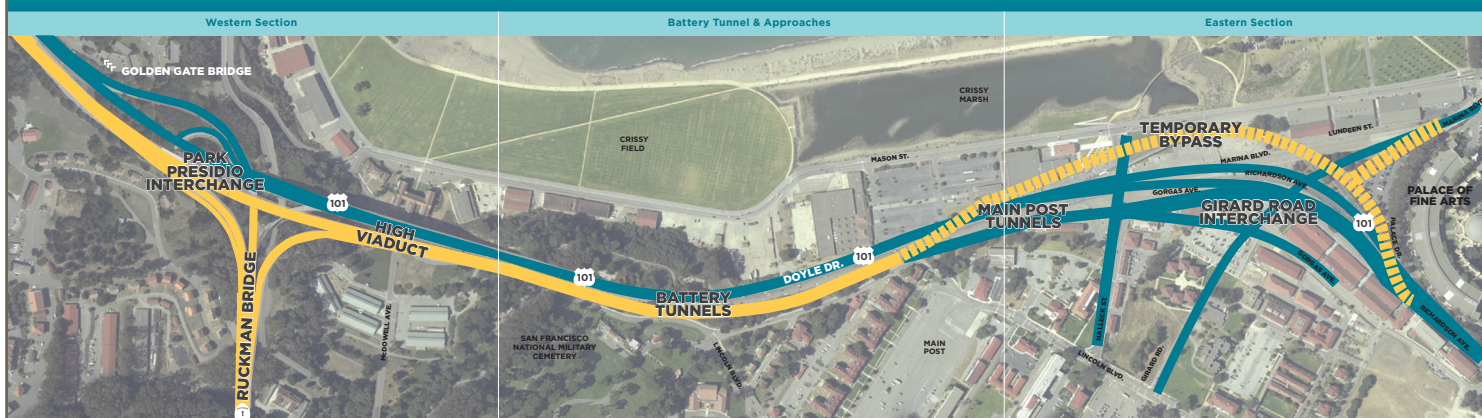
PROJECT DESCRIPTION: The second phase of the project will consist of replacing portions of the existing Doyle Drive facilities on Route 101 in the City of San Francisco, which serves as the south access to the Golden Gate Bridge along the northern edge of the City of San Francisco. The new facility will be a six-lane parkway-type roadway with a southbound auxiliary lane, between the Park Presidio Interchange and the new Presidio access at Girard Road. The Project will also include operation and maintenance of all of the replaced Doyle Drive facilities.

PROJECT SCHEDULE: Phase I of the Doyle Project (Contracts 1 through 4) is currently in progress. Contract 1 for Environmental Services and Building Stabilization is ongoing throughout the project. This contract achieved an overall small business participation rate of 83%. Contract 2 for Utilities Relocation (Ghilotti Bros., Prime) is nearing completion and achieved over 62% small business participation. Contract 3 for construction of the Ruckman Bridge and Southbound High Viaduct (CC Myers, Prime) is currently in progress. Contract 4 for construction of the Southbound Bound Battery Tunnel and Temporary Detour (R&L Brosamer, Prime) is underway.

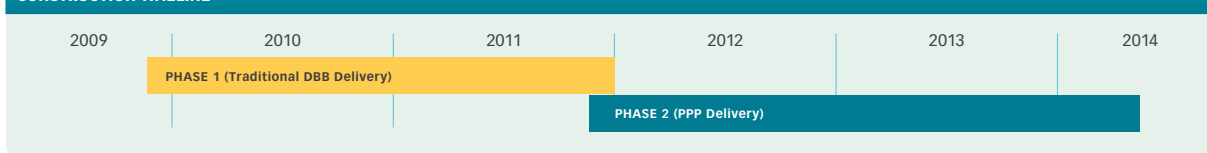
Phase II construction (formerly Contracts 5 through 8) will begin in late 2011 and last through mid-2014. Following construction completion in 2014, there will be an approximately 30-year period of Operations and Maintenance. This Phase will operate via a Public-Private Partnership in which the selected bidder (Golden Link Partners) will Design, Build, Finance, Operate and Maintain the project.

PROCUREMENT SCHEDULE: Contracts 1 and 2 are nearing completion. Contracts 3 and 4 are already let and continue to identify opportunities for Underutilized (UDBE), Disadvantaged (DBE), Small (SBE), Disabled Veteran (DVBE) and Local Business Enterprises (LBE). This process to detect opportunities and facilitate subcontracting is ongoing. Phase II of the Presidio Parkway Project, which has an estimated value of \$491 million, is currently in the latter stages of the Procurement Process. Phase II includes a unique incentive program which will encourage the developer to not only meet but exceed their UDBE requirements.

PROJECT FEATURES



CONSTRUCTION TIMELINE



PRIME CONTRACTOR FIRMS

Contract	Name	Contact	Email
Contract #2	Ghilotti Brothers	Kate Eckhaus	kateE@ghilottibros.com
Contract #3	CC Myers	Christine Williams	cwilliams@ccmyersinc.com
Contract #4	R&L Brosamer	Brian Stopper	brian@brosamer.com
Phase II	Golden Link Partners: HOCHTIEF Meridiam Infrastructure Flatiron West, Inc. Kiewit Infrastructure West Co. HNTB Corporation		smallbusiness@presidioparkway.org

PARTICIPATION GOALS

Contract	SBE	DVBE	UDBE	DBE	LBE
Contract #1	25% SBE	5% DVBE	–	–	–
Contract #2	25% SBE	5% DVBE	–	–	–
Contract #3	25% SBE*	5% DVBE*	7.41% UDBE	–	–
Contract #4	25% SBE*	5% DVBE*	6.54% UDBE	13% DBE*	–
Phase II	25% SBE*	3% DVBE*	5% UDBE	13.5% DBE*	5% LBE*

* Aspirational goals; all 25% SBE goals are aggregate

CERTIFYING AGENCIES

Small Business Enterprise (SBE): CA Department of General Services

Disabled Veteran Business Enterprise (DVBE): CA Department of General Services

Underutilized Disadvantaged Business Enterprise (UDBE): CA Department of Transportation/CUCP

Disadvantaged Business Enterprise (DBE): CA Department of Transportation/CUCP

Local Business Enterprise (LBE): SF Human Rights Commission

To receive information regarding the Disadvantaged and Small Business Enterprise Participation Program, please send a request to smallbusiness@presidioparkway.org or call (415) 420-7528.

